

OPERATION AND MAINTENANCE

- The value of the maximum permissible payload of the towing vehicle shall be decreased by the total mass of the coupling device (see technical data).
- The coupling device may be used only for towing of trailers with relevant coupling devices.
- Fastening of the coupling device to the vehicle as well as of the towing arm to the towing frame shall be checked after the first 300 km run with trailer. It is recommended to repeat such inspections regularly every 3000 km run with trailer.
- The towing arm with ball shall be kept clean and only appropriate grease shall be used to its protection.
- Inspections of ball diameter are necessary during the often use of the coupling device. Diameter shall not be smaller than 49 mm in any place.
- If a trailer isn't coupled, must be the detachable towing arm removed. Towing arm, which can be removed without using of tools, is allowed being detachable. Towing arm requiring tools for its removal isn't allowed to be detachable. If the towing arm is removed, it is necessary to protect the chuck of bayonet lock by the delivered cover.

WARRANTY CERTIFICATE

The manufacturer provides a 24 months warranty period from the date of sale for the fail-safe function of the supplied coupling device if all instructions given by him for mounting, operation and maintenance of that product have been kept.

The user shall apply the warranty claim at the sale organisation where the coupling device was bought. The shop dealer with the representative of manufacturer shall assess the claim in the legal time limit and in accordance with claim rule in force.

Condition of warranty is that coupling device has been used only for the purposes it has been designed and intended to and in accordance with the technical data put down in this instruction book. Next conditions of warranty are the observance of mounting procedure and the only use of original parts (especially of the towing arm).

Warranty does not cover damage of its surface protection made mechanically or by its use in extreme weather conditions.

Warranty expires if coupling device has been damaged in an accident of relevant towing or towed vehicle, with exception of an accident caused evidently by the own coupling device itself. Warranty is also cancelled in case of intervention into the mechanism of the coupling device leading to any change or improvement.

Date of sale:

Sales company:

HOOK CZ s.r.o.

Košuličova 2

Brno 619 00

CZECH REPUBLIC

Tel., fax: +420 543 252 024

date.:15102013



HOOK CZ s.r.o.

Košuličova 2

Brno 619 00

CZECH REPUBLIC

OPERATING INSTRUCTIONS WARRANTY CERTIFICATE

for
coupling device

ES-approval number:

e8 00-0042

Design: a) not detachable ball joint

TYP: **BTZ 21-13A**

Design: b) detachable ball joint

TYP: **BTZ 21-13B**

Design: c) vert. detachable ball joint

TYP: **BTZ 21-13C**

For vehicle:

Manufacturer:

Škoda

Model:

Octavia II (typ 1Z) 04-

Octavia II Combi (typ 1Z) 05-

Superb II lim 06/08-

Superb II combi 01/10-

TECHNICAL DATA:

D-value: 10,20 kN

Maximum static vertical mass S: 85 kg

Mass of the coupling device: (a) 18,7 kg, (b) 20 kg, (c) 21,5 kg

The Coupling device was homologated pursuant to the Directive 94/20/EC. It is intended for towing of trailers and it was checked for D-value 10,20 kN. According to expression mentioned below, for example, it corresponds with trailer mass 1800 kg and vehicle mass 1891 kg. But technical data inscribed in the Vehicle Registration Document are valid. Value of vertical load S mustn't be exceeded.

Calculation of D-value:
$$D \text{ [kN]} = \frac{\text{Max. trailer mass [kg]} \times \text{Max. vehicle mass [kg]}}{\text{Max. trailer mass [kg]} + \text{Max. vehicle mass [kg]}} \times \frac{9,81}{1000}$$

CONDITIONS FOR ATTACHMENT OF THE COUPLING DEVICE TO THE VEHICLE

- Any change or reconstruction of the coupling device is not permitted!
- Presumption for the installation of the coupling device into the towing vehicle is that the vehicle meets perfectly the geometric parameters declared by manufacturer and that the fixing points on bottom of the rear part of bodywork are not deformed or injured by accident or attacked by corrosion at elder vehicles.

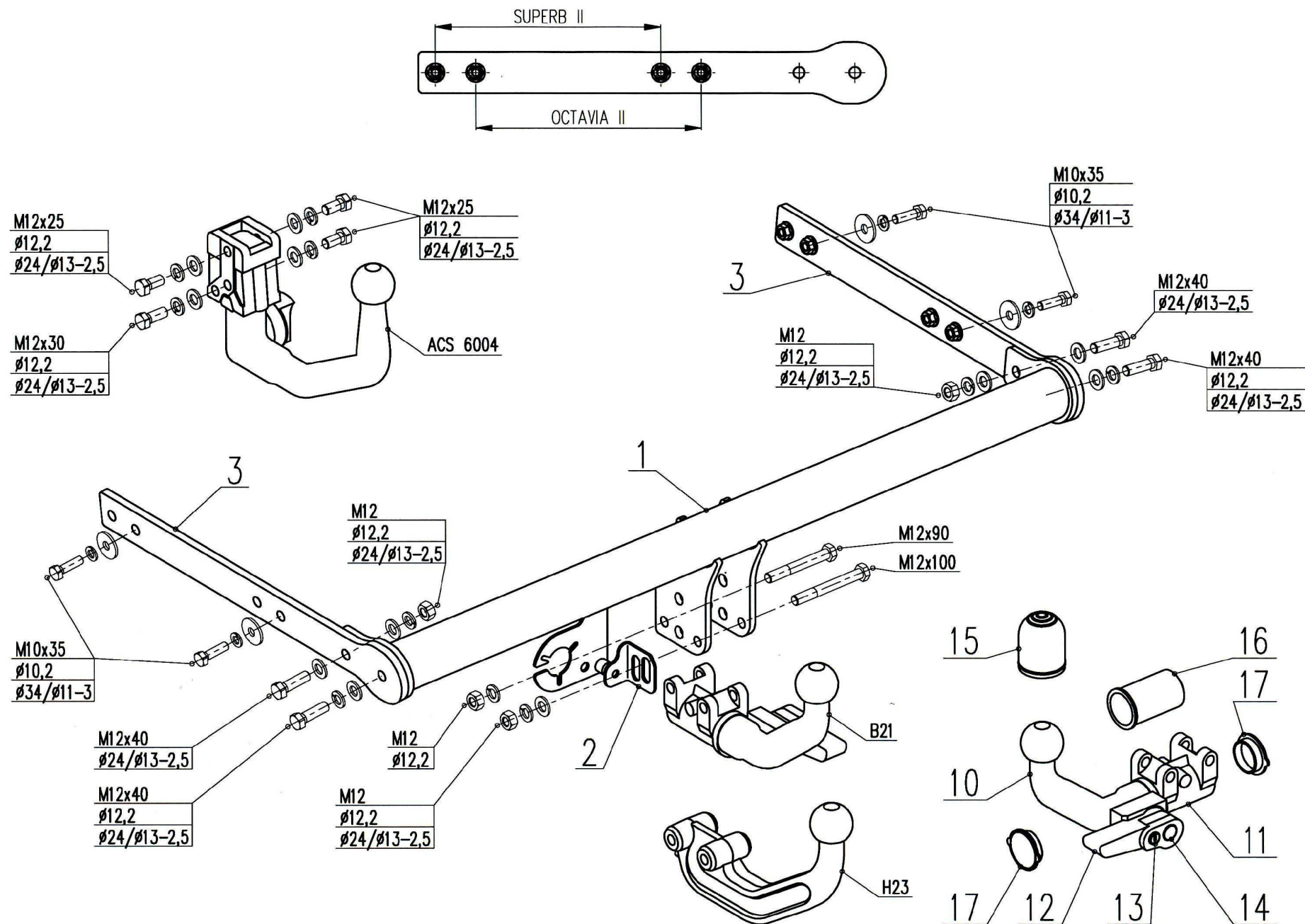
Fitting instructions:

- Remove rear lamps and the bumper.
- Remove the bumper reinforcement - will not be used any more.
- Let down the exhaust – dismount bolts of rubber suspender.
- Release the heat shield above the exhaust partly – dismount 3 steel nuts.
- Remove cover tapes from the prepared holes on outer sides of both vehicle beams.
- Insert plate **(3)** into chassis. According to the picture for the required type of vehicle fix sideplates with connection accessories. !! **Choose the correct pair of holes!!**
- Insert the crossbeam **(1)** among side plates. Connect together with appropriate connection accessories.
- **Important: Its necessary equalize the crossbeam horizontally with side plates. Its necessary to push the towbar into the vehicle utmost before final tighten.**
- Mount the towball and the socket holder, see the picture 1.
- All bolts tighten firmly. M10 = 45 Nm, M 12 = 75 Nm.
- Mount back the heat shield and the exhaust.
- Install the wiring.
- Make an incision in the underside of the bumper in the axis of the vehicle according to the picture 2. **Important: Incisions are drawn in view into the bumper!**
- **Octavia II 2008-:** At this type is necessary cut the plastic holder (original shields) sticked on the inner side of the bumper in place of touch with consoles of the towbar.
- The bumper put on the vehicle so that turn, it in order to the profile of the bumper pass between the back of the vehicle and the towball. Consoles and bolts are fully hidden by the bumper!!!

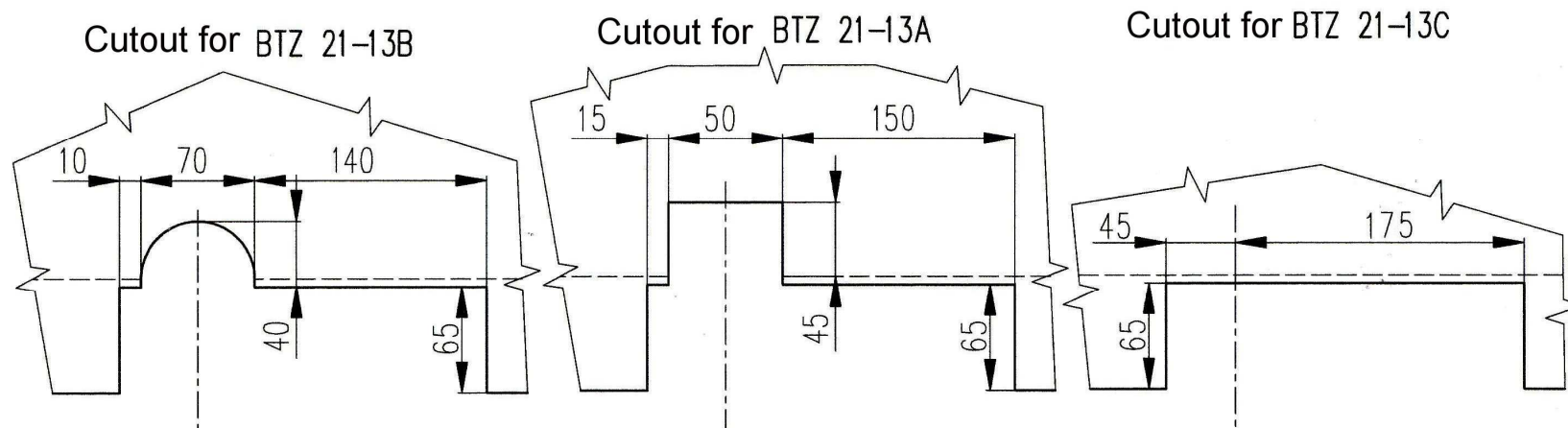
List of delivered parts:

crossbeam (1)	1
plate (3)	2
towing arm + plastic coversocket holder (2)	1
side plate left (3) + right (4)	1+1
bolt M12 x 90 + spring washer + nut M12	1+1+1
bolt M12 x 100 + spring washer + nut M12 + washer 13	1+1+1+1
bolt M10 x 35 + spring washer + washer 11	4+4+4
bolt M12 x 40 + washer 13+ spring washer + nut M12.....	2+4+2+2
bolt M12 x 40 + washer 13 + spring washer	2+2+2
fixative chuck cover.....(only for BTZ 21-13B).....	1
fixative spindle cover(only for BTZ 21-13B).....	1
wiring.....	by the order

FIGURE – coupling device

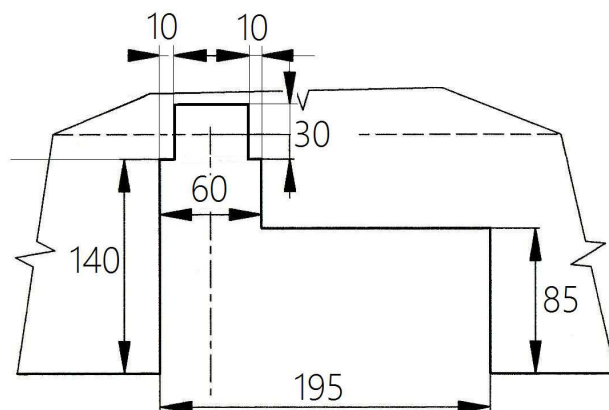


Škoda Octavia II lim 04-, combi 05-
 Škoda Octavia II 08- lim,combi



Škoda Superb II lim 06/08-, combi 01/10-

Superb II combi 01/10-
 Cutout for BTZ 21-13ABC



Superb II lim. 06/08-
 Cutout for BTZ 21-13ABC

